

## SCHEDULE 80 WELDED & SEAMLESS PIPE



- Schedule 80 Extra Heavy Pipe
- CD A: 48,000 psi tensile / 30,000 psi yield
- CD B: 60,000 psi tensile / 35,000 psi yield
- Items highlighted in blue are stock items.

Size	Dimensions		Thick- ness	Lbs/Ft. Plain Ends	End	Type	Part No.
	OD	ID					
3/8" x 21'	.675"	.423"	.126"	.74	PE	Black	Y1411
3/8" x 21'	.675	.423	.126	.74	PE	Galvanized	-
1/2" x 21'	.840	.546	.147	1.09	PE	Black	Y1413
1/2" x 21'	.840	.546	.147	1.09	PE	Galvanized	-
3/4" x 21'	1.050	.742	.154	1.47	PE	Black	Y1414
3/4" x 21'	1.050	.742	.154	1.47	PE	Galvanized	-
1" x 21'	1.315	.957	.179	2.17	PE	Black	Y1415
1" x 21'	1.315	.957	.179	2.17	PE	Galvanized	-
1-1/4" x 21'	1.660	1.278	.191	3.00	PE	Black	Y1416
1-1/4" x 21'	1.660	1.278	.191	3.00	PE	Galvanized	Y1354
1-1/2" x 21'	1.900	1.500	.200	3.63	PE	Black	Y1417
1-1/2" x 21'	1.900	1.500	.200	3.63	PE	Galvanized	Y8486
2" x 21'	2.375	1.939	.218	5.02	PE	Black	Y1418
2" x 21'	2.375	1.939	.218	5.02	PE	Galvanized	Y1356
2-1/2" x 21'	2.875	2.323	.276	7.66	PE	Black	Y1419
2-1/2" x 21'	2.875	2.323	.276	7.66	PE	Galvanized	-
3" x 21'	3.500	2.900	.300	10.25	PE	Black	Y1420
3" x 21'	3.500	2.900	.300	10.25	PE	Galvanized	-
3-1/2" x 21'	4.000	3.364	.318	12.51	PE	Black	Y1421
3-1/2" x 21'	4.00	3.364	.318	12.51	PE	Galvanized	-
4" x 21'	4.500	3.826	.337	14.98	PE	Black	Y1423
4" x 21'	4.500	3.826	.337	14.98	PE	Galvanized	-
5" x 21'	5.563	4.813	.375	20.78	PE	Black	Y8483
6" x 21'	6.625	5.761	.432	28.57	PE	Black	Y8485
8" x 21'	8.625	7.625	.500	43.39	PE	Black	Y8484
10" x 21'	10.750	9.750	.500	54.74	PE	-	-
12" x 21'	12.750	11.750	.500	65.42	PE	-	-

## EXPANDED METAL - STANDARD

- Carbon Steel

Style	Weight per 100 Sq.Ft.	Diamond	Thick- ness	Std. Sheet Size		Size	Part No.
				Width	Length		
1/4" No. 18	117	.26" x 1.0"	.125"	4'	8'	-	-
1/2" No. 20	43	.459 x 1.120	.134	4'	8'	-	-
1/2" No. 18	70	.507 x 1.195	.161	4', 6'	8', 10'	-	-
1/2" No. 16	87	.517 x 1.195	.159	4', 6'	8', 10'	4' x 8'	Y0600
1/2" No. 13	147	.503 x 1.2	.199	4', 6'6"	8'	-	-
3/4" No. 16	54	.880 x 2.0	.183	4', 6'6"	8', 10'	-	-
3/4" No. 13	80	.880 x 2.0	.185	4', 6'	8', 10'	-	-
3/4" No. 10	119	.889 x 2.0	.277	4'	8'	-	-
3/4" No. 9	180	.857 x 2.0	.290	4', 6'	8', 10', 12'	4' x 8'	Y0608
3/4" No. 9	180	.857 x 2.0	.290	4', 6'	8', 10', 12'	4' x 12'	Y0609
1" No 16	47	1.01 x 2.375	.196	4'	8'	-	-
1-1/2" No. 16	40	1.35 x 3.125	.210	4'	8'	-	-
1-1/2" No. 13	60	1.35 x 3.125	.213	4', 6'	8', 10'	-	-
1-1/2" No. 10	79	1.33 x 3.00	.248	4', 6'	8', 10'	-	-
1-1/2" No. 9	119	1.33 x 3.00	.289	4', 6'	8', 10'	4' x 8'	Y0614
1-1/2" No. 6	250	1.33 x 3.00	.385	6'	12'	-	-

## EXPANDED METAL - FLATTENED



- Carbon Steel

Style	Weight per 100 Sq.Ft.	Diamond	Thick- ness	Std. Sheet Size		Size	Part No.
				Width	Length		
1/4" No.20-22	87	.26" x 1.03"	.031"	4'	8'	-	-
1/4" No.18-20	113	.26 x 1.03	.042	4'	8'	-	-
1/2" No.20-22	41	.438 x 1.25	.032	3', 4'	8'	-	-
1/2" No.18-20	66	.507 x 1.26	.038	3', 4'	8', 10'	-	-
1/2" No.16-18	82	.507 x 1.26	.050	3', 4'	8', 10'	-	-
1/2" No.13-15	138	.503 x 1.26	.070	3', 4'	8'	-	-
3/4" No. 16-18	51	.880 x 2.10	.048	3', 4'	8', 10'	-	-
3/4" No.14-16	68	.880 x 2.10	.063	3', 4'	8'	-	-
3/4" No.13-15	76	.880 x 2.10	.070	3', 4'	8', 10'	-	-
3/4" No.9-11	171	.857 x 2.10	.110	3', 4', 5'	8', 10'	4' x 8'	Y0638
3/4" No.9-11	171	.857 x 2.10	.110	3', 4', 5'	8', 10'	4' x 10'	Y0639
3/4" No.9-11	171	.857 x 2.10	.110	3', 4', 5'	8', 10'	5' x 10'	Y0640
1" No. 16-18	46	1.01 x 2.50	.048	3', 4'	8'	-	-
1-1/2" No.16-18	29	1.35 x 3.25	.048	3', 4'	8'	-	-
1-1/2" No.14-16	38	1.35 x 3.28	.063	3', 4'	8'	-	-
1-1/2" No.13-15	57	1.35 x 3.28	.070	3', 4'	8', 10'	-	-
1-1/2" No.9-11	113	1.35 x 3.25	.106	3', 4'	8', 10'	4' x 8'	Y0643

## EXPANDED METAL GRATING

### • Carbon Steel

Style	Diamond	Thick- ness	Std. Sheet Size		Size	Part No.
			Width	Length		
3.0 lbs.	1.44" x 5.0"	1/2"	4', 6'	5', 8', 10'	4' x 8'	Y0650
3.0 lbs.	1.44 x 5.0	1/2"	4', 6'	5', 8', 10'	4' x 10'	Y0651
3.14 lbs.	2.00 x 6.0	9/16"	4', 6'	10'	-	-
4.0 lbs.	1.395 x 5.0	5/8"	4', 5', 6'	8'	4' x 8'	Y0653
4.0 lbs.	1.395 x 5.0	5/8"	4', 5', 6'	8'	4' x 10'	Y0654
4.27 lbs.	1.412 x 4.0	5/8"	4', 6'	8'	-	-
5.0 lbs.	1.143 x 5.0	5/8"	4'	5', 8', 10'	4' x 8'	Y0655
6.25 lbs.	1.412 x 5.0	47/64"	4', 6'	8'	-	-
7.0 lbs.	1.333 x 5.0	3/4"	4'	4'2", 8'4"	-	-

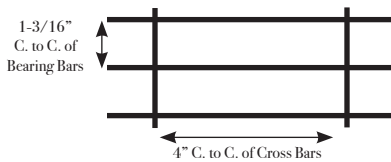
## CARBON STEEL GRATING

- Standard or Serrated
- Available in 24" and 36" widths, 20' and 24' lengths

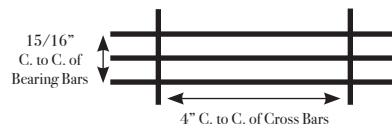
Bearing Bars	Cross Bars	Lbs. per Sq. Ft.	
		Type 1A	Type 1B
3/4" x 1/8"	1/4"	3.99	4.63
3/4" x 3/16"	1/4"	5.67	6.31
1" x 1/8"	1/4"	5.15	5.79
1" x 3/16"	1/4"	7.35	7.99
1-1/4" x 1/8"	1/4"	6.20	6.84
1-1/4" x 3/16"	1/4"	9.03	9.67
1-1/2" x 1/8"	1/4"	7.35	7.99
1-1/2" x 3/16"	5/16"	10.94	11.80
1-3/4" x 3/16"	5/16"	12.62	13.48
2" x 3/16"	5/16"	14.30	15.16
2-1/4" x 3/16"	5/16"	15.87	16.74
2-1/2" x 3/16"	5/16"	17.55	18.42

Bearing Bars	Cross Bars	Lbs. per Sq. Ft.	
		Type 2A	Type 2B
3/4" x 1/8"	1/4"	4.95	5.59
3/4" x 3/16"	1/4"	7.11	7.75
1" x 1/8"	1/4"	6.44	7.08
1" x 3/16"	1/4"	9.27	9.91
1-1/4" x 1/8"	1/4"	7.79	8.43
1-1/4" x 3/16"	1/4"	11.43	12.07
1-1/2" x 1/8"	1/4"	9.27	9.91
1-1/2" x 3/16"	5/16"	13.82	14.68
1-3/4" x 3/16"	5/16"	15.98	16.84
2" x 3/16"	5/16"	18.14	19.00
2-1/4" x 3/16"	5/16"	20.16	21.03
2-1/2" x 3/16"	5/16"	22.32	23.19

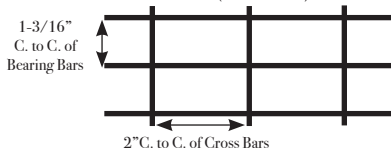
TYPE 1A - GENERAL DUTY



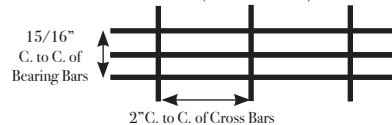
TYPE 2A - HEAVIER LOADS



TYPE 1B - SMALLER OPENINGS (STANDARD)



TYPE 2B - HEAVIEST LOADS (CLOSE SPACE)



## STAINLESS STEEL SELECTION GUIDE

**304 / 304L** - 304 Stainless Steel is a versatile general purpose steel with good resistance to atmospheric corrosion, many organic and inorganic chemicals, and to food and beverages. 304L has .03 maximum carbon and is used when extensive welding is called for.

**304H** - A modification of Type 304, this stainless steel has a controlled carbon content in a range of .04 to .010 for increased strength at temperatures above 800°F. Type 304H can not be hardened by heat treatment but can be hardened through cold working.

**316 / 316L** - A molybdenum stainless steel containing austenitic stainless intended to provide improved corrosion resistance.

**317L** - A molybdenum steel containing austenitic stainless which provides improved corrosion resistance over 316 and 316L due to its higher moly content.

**904L** - Widely used in chemical processing plants. Its combination of chromium, nickel, moly and copper make it resistant to a range of sulfuric acid environments.

L= Low Carbon. Good for welding. .03 max carbon.

H= High Carbon. .04 carbon or higher.